

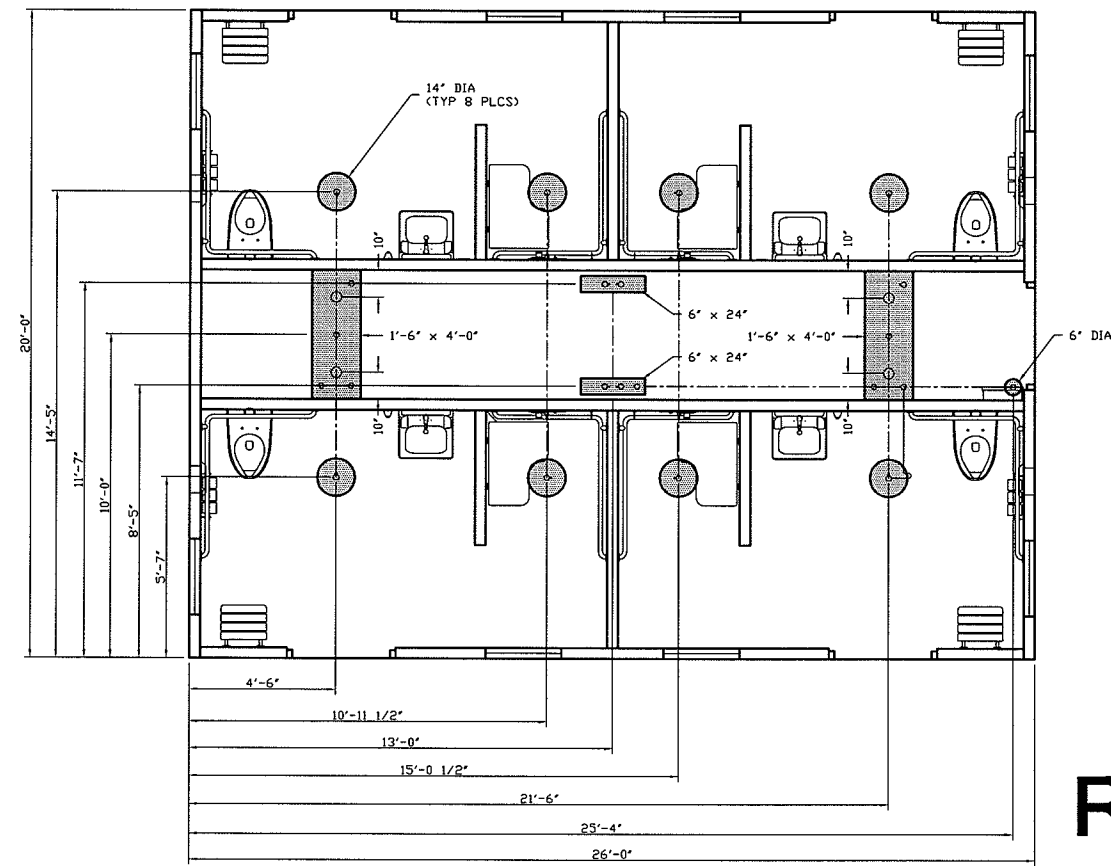
ALL PIPING INDICATED ON THIS SHEET IS NOT BY CXT

- BELOW FLOOR PIPING - KEY NOTES**
- 4" CLEAN OUT TO GRADE.
 - 2" FLOOR DRAIN WITH FIELD INSTALLED TRAP PRIMER SYSTEM IF REQUIRED BY AUTHORITY HAVING JURISDICTION. (14" DIA BLOCKOUT)
 - 2" VENT PIPES EXTENDED 12" ABOVE FINISHED FLOOR LEVEL, PROVIDE TEST PLUG. (1'-6" x 4'-0" BLOCKOUT)
 - 4" WASTE PIPE EXTENDED 12" ABOVE FINISHED FLOOR LEVEL, PROVIDE TEST PLUG. (1'-6" x 2'-0" BLOCKOUT)
 - 2" TYPE K ANNEALED "SOFT" COPPER WATER SERVICE EXTENDED 12" ABOVE FINISHED FLOOR LEVEL, PROVIDE CAP AT END. (6" x 2'-0" BLOCKOUT)
 - 30" MIN. BURY, PROVIDE TRACER TAPE.
 - 4'-6" MIN. BURY.
 - ELECTRICAL STUB UP. (6" DIA BLOCKOUT)
 - 2" VENT PIPES EXTENDED 12" ABOVE FINISHED FLOOR LEVEL, PROVIDE TEST PLUG. (6" x 2'-0" BLOCKOUT)
 - 2" FLOOR DRAIN WITH FIELD INSTALLED TRAP PRIMER SYSTEM IF REQUIRED BY AUTHORITY HAVING JURISDICTION. (1'-6" x 4'-0" BLOCKOUT)

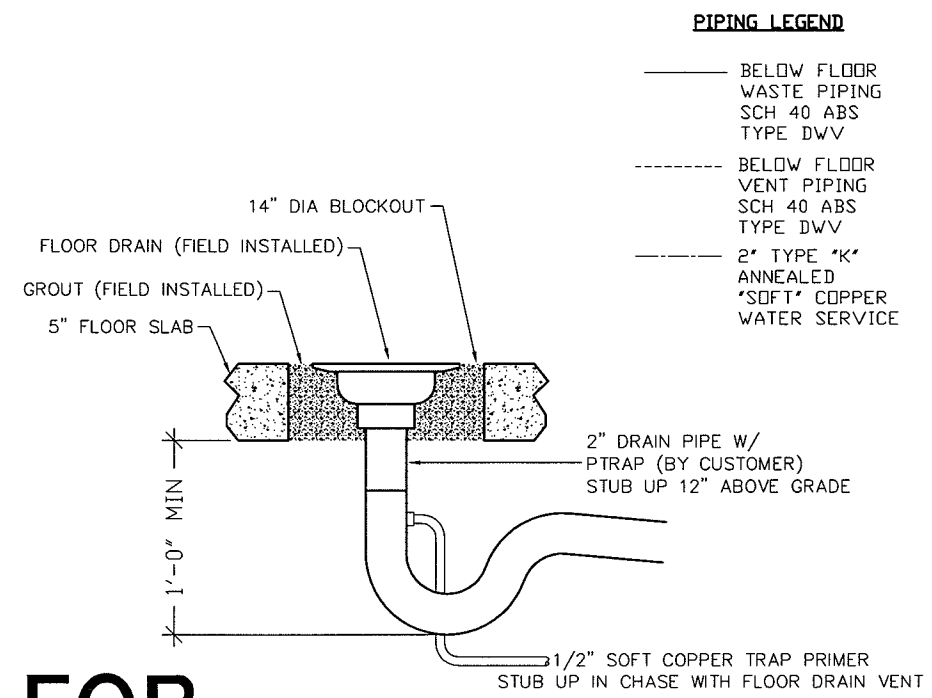
PIPING LEGEND

FOR REFERENCE ONLY

BELOW FLOOR PIPING



FLOOR BLOCKOUT SIZE AND LOCATIONS



FLOOR DRAIN DETAIL

FOR REFERENCE ONLY

THIS DRAWING IS SUPPLIED FOR REFERENCE ONLY. PLEASE CONTACT CXT ENGINEERING DEPARTMENT FOR BUILDING SPECIFIC CONTROLLED DOCUMENTS PRIOR TO ANY FIELD WORK.



NAVAJO FLUSH / SHOWER

NOTICE
The information contained herein is proprietary and the exclusive property of CXT Incorporated. The information may only be used by the original recipient for the purpose intended. Reproduction or distribution of this information is strictly prohibited without the prior written consent of CXT Incorporated. By allowing use of this information, CXT Incorporated grants no warranty, express or implied, including a warranty of merchantability or of fitness for a particular purpose.

REV.	DESCRIPTION	APPROVAL	DATE
SCALE	1/4"=1'-0"	DATE	11-10-06
DRAWN	ROB D WALKER	FILE NO.	FOR REF.
CHECKED		PLOT	48

FLOOR DRAIN LOCATION & BELOW FLOOR PIPING

DWG NO.	SHEET	REV.
N-27	27	
	33	