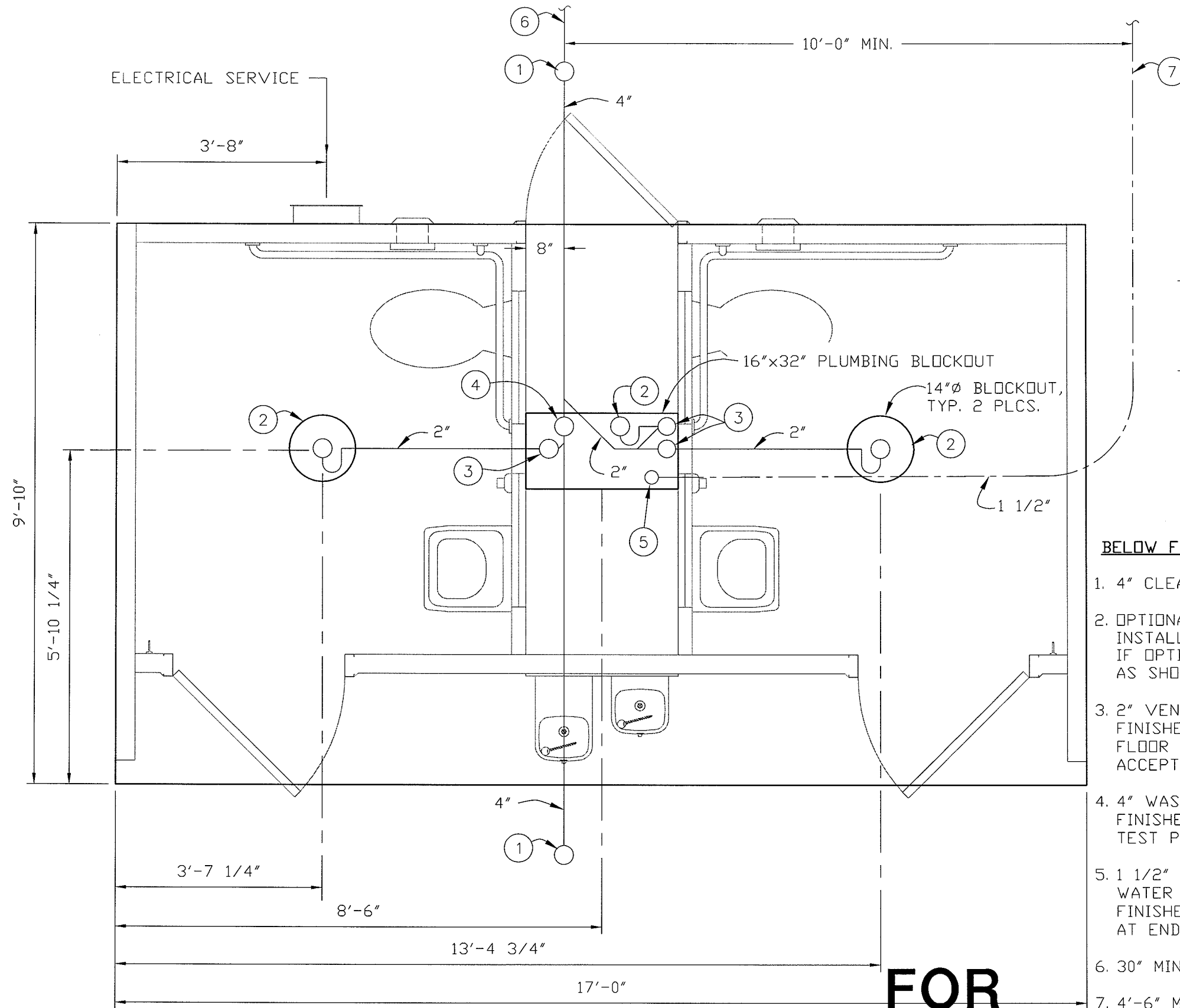


THIS DRAWING IS SUPPLIED FOR REFERENCE ONLY. PLEASE CONTACT CXT ENGINEERING DEPARTMENT FOR BUILDING SPECIFIC CONTROLLED DOCUMENTS PRIOR TO ANY FIELD WORK.



PIPING LEGEND

- BELOW FLOOR WASTE PIPING
SCH 40 ABS
TYPE DWV
- BELOW FLOOR VENT PIPING
SCH 40 ABS
TYPE DWV
- 1 1/2" TYPE "K" ANNEALED "SOFT" COPPER WATER SERVICE

BELOW FLOOR PIPING - KEY NOTES

1. 4" CLEAN OUT TO GRADE.
2. OPTIONAL 2" FLOOR DRAIN WITH FIELD INSTALLED TRAP PRIMER SYSTEM. IF OPTION IS ACCEPTED, INSTALL AS SHOWN WITH VENT & WASTE PIPE.
3. 2" VENT PIPES EXTENDED 12" ABOVE FINISHED FLOOR LEVEL, (1 FOR EACH FLOOR DRAIN IF FLOOR DRAIN OPTION ACCEPTED) PROVIDE TEST PLUG.
4. 4" WASTE PIPE EXTENDED 12" ABOVE FINISHED FLOOR LEVEL, PROVIDE TEST PLUG.
5. 1 1/2" TYPE K ANNEALED "SOFT" COPPER WATER SERVICE EXTENDED 12" ABOVE FINISHED FLOOR LEVEL, PROVIDE CAP AT END.
6. 30" MIN. BURY, PROVIDE TRACER TAPE.
7. 4'-6" MIN. BURY.

**FOR
REFERENCE
ONLY**

ALL PIPING INDICATED ON THIS SHEET IS NOT BY CXT

FLOOR DRAIN BLOCKOUTS & BELOW FLOOR PIPING

1/2"=1'-0"



PROJECT TITLE
CORTEZ
CXT STANDARD BUILDING

NOTICE
The information contained herein is proprietary and the exclusive property of CXT Incorporated. The information may only be used by the original recipient for the purpose intended. Reproduction or distribution of this information is strictly prohibited without the prior written consent of CXT Incorporated. By allowing use of this information, CXT Incorporated grants no warranty, express or implied, including a warranty of merchantability or of fitness for a particular purpose.
CXT Incorporated

| | | | |
|--|--|--|--|
| | | | |
| | | | |
| | | | |
| | | | |

| REV. | DESCRIPTION | APPROVAL | DATE |
|---------|--------------|----------|----------|
| SCALE | 1/2"=1'-0" | DATE | 11-10-06 |
| DRAWN | ROB D WALKER | FILE NO. | FOR REF. |
| CHECKED | | PLOT | 24 |

| | | |
|-------------------------|-------|------|
| FIELD STUB UP LOCATIONS | | |
| DWG NO. | SHEET | REV. |
| CZ-19 | 19 | |
| | 22 | |